

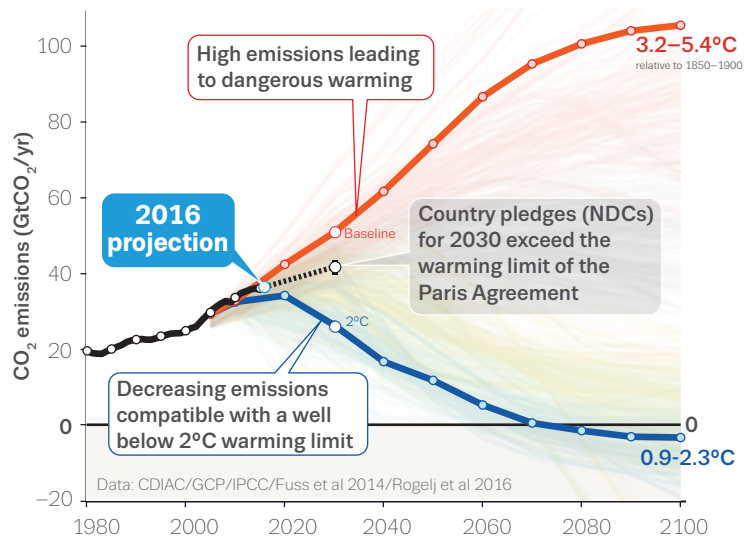
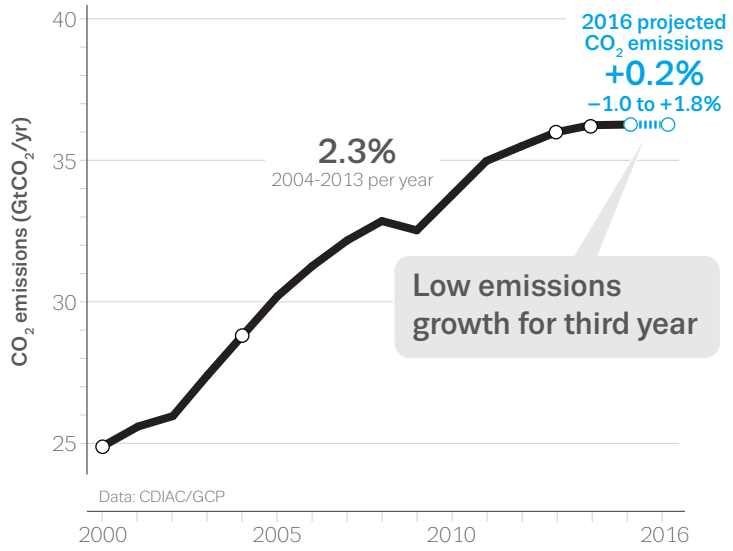
Global Carbon Budget 2016

Atmospheric CO₂ levels have crossed 400 ppm...
 ...only near zero emissions will stop this rise
 315 ppm
 Data: Scripps/NOAA-ESRL
 1960 2016

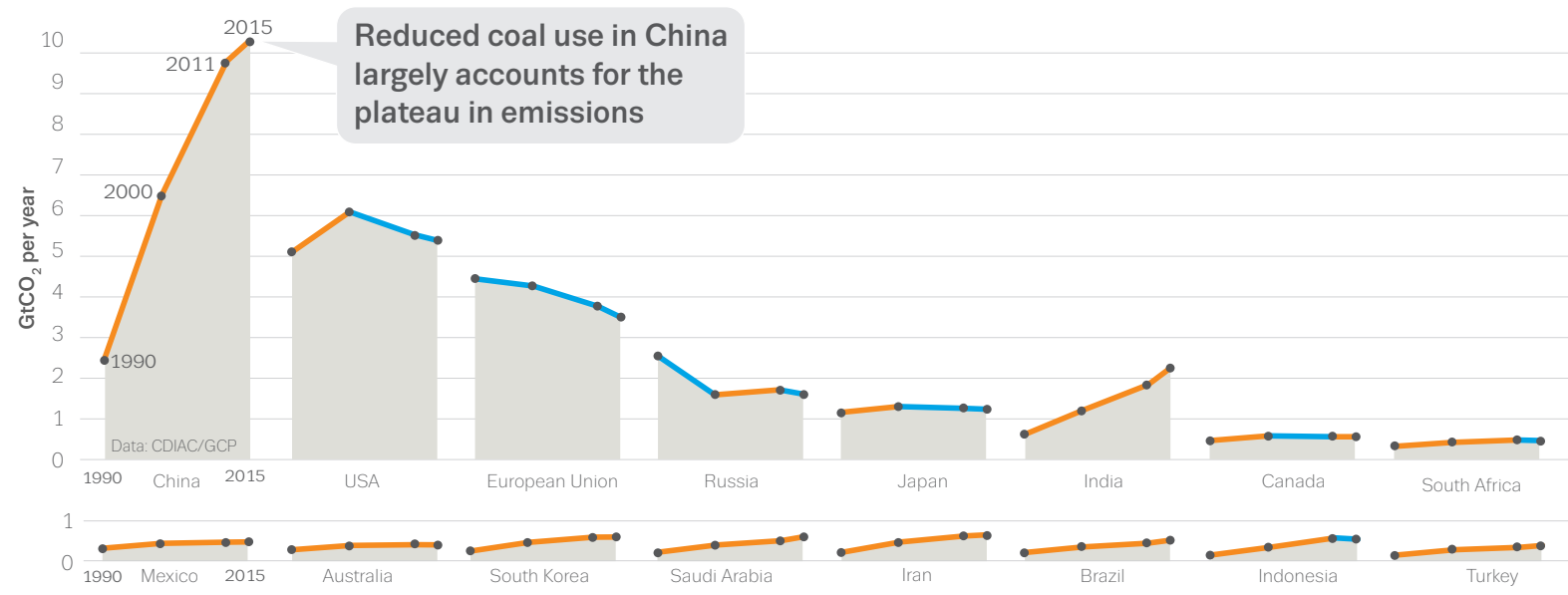
Global emissions from fossil fuels and industry did not grow in 2015 and are projected to **rise slightly in 2016**.

This is the third year in a row where global emissions are below 1% growth while global GDP exceeds 3% growth

Between the Paris agreement and the Marrakesh plan of action, we are **here**

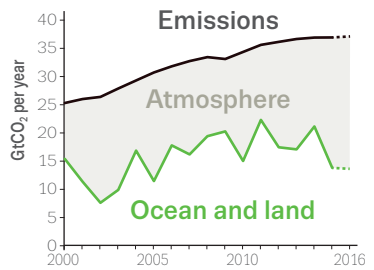


Emissions trends vary among countries

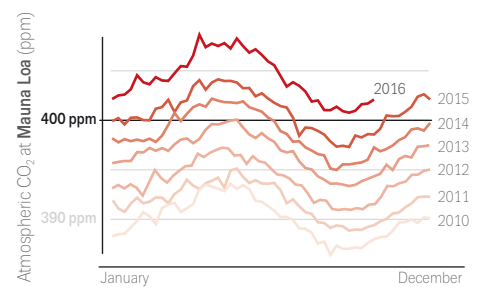


While atmospheric CO₂ moves permanently above 400ppm

The big El Niño in 2015-2016 led to smaller CO₂ uptake by plants and left much more emissions in the atmosphere than usual



Atmospheric CO₂ concentration will continue to rise until CO₂ emissions are cut down to near zero



Produced by the Future Earth Media Lab for the Global Carbon Project. <http://www.globalcarbonproject.org/carbonbudget/index.htm>
 Written and edited by Corinne Le Quéré (Tyndall Centre, University of East Anglia) with the Global Carbon Budget team.
 Updated from 2015 version. Infographic by Nigel Hawtin. Thanks to Glen Peters, Asher Minns, Bob Woolliams for comments.
 Credits: Le Quéré et al. Earth System Science Data 2016; NOAA-ESRL and the Scripps Institution of Oceanography; CDIAC.
 NDC projection based on UNFCCC analysis based of Rogelj et al Nature 2016 assuming constant CO₂/GHG ratio

